

Annual Educational and Financial Report



St Raphael's Central School COWRA

P.O. Box 7
Liverpool Street
COWRA NSW 2794
Ph: (02) 6342 2940
Fax: (02) 6342 3701

Email: office@straphaels.com.au
Website: <http://www.straphs.net.au>

2007

*In a spirit of Strength and Gentleness I will
be faithful to my God, strive for excellence
and cooperate with others in all that I do.*



Catholic Education Office
Diocese of Bathurst

St Raphael's Central School COWRA

Dear Parents,

The following Educational and Financial Report is provided to you in accordance with the NSW Board of Studies Guidelines. Please feel free to make comment to me about any element of this report.

Michael Gallagher
Principal

Message from the Parish Priest

I am very pleased with the life and activity of St Raphael's Central School. (While coping well with the demands of everyday issues) the school is a vibrant centre of learning. The staff is conscientious and caring and there is a good atmosphere in the school.

A conscious effort is made to nurture every aspect of the children's lives.

I am happy to add my comments to this annual report.

Fr Owen Gibbons
Parish Priest.

Message from the Principal

The strength of partnerships established in our school largely determines our success and degree of community satisfaction in our duty as a provider of relevant learning experiences in a changing world. The secure environment of the school enables quality learning for our emerging young adults. Supportive, dynamic staff members establish sound, supportive and challenging relationships with the students and their families. As models of adult ideals, I am proud to be associated with this staff. Ours is a growing, successful and well established place of learning.

Mr Michael Gallagher
Principal

Message from the P&F Association

St. Raphael's Central School provides an enriching and welcoming environment for both our students and our parents. The Parents and Friends Association has had a long association with the School and always found the staff to be conscientious, approachable and caring. Parents are made to feel welcome and their concerns are always heard. The Parents and Friends meetings are generously held in the School each month with a positive attendance by the Principal and Deputy Principal and interested parents. I commend St. Raphael's on their ongoing work and commitment and its' positive inclusion of its' Parent Body.

Mrs. Robyn Lynch
P&F President, 2007

MISSION STATEMENT

St Raphael's Central School, Cowra – a Catholic school in the Brigidine tradition working in the spirit of “Strength and Gentleness” where the school community aims to:

Encourage individuals to strive for excellence while valuing and respecting individual differences;

Provide a relevant curriculum for a changing world enabling students to grow towards becoming competent, confident young adults who can think critically and make decisions informed by Catholic values;

Educate the whole person in a quality learning and secure environment;

Promote a strong sense of community, built on an active partnership of school, home, parish and local community.

Enrolment policies and profiles:

Criteria for enrolment and the enrolment policy are detailed in Policy #202 in the School Policies.

In 2007 the student population was 400. There were 298 students in the Primary Department and 102 in the Secondary Department.

Kindergarten	43	Year 7	32
Year 1	43	Year 8	34
Year 2	36	Year 9	24
Year 3	36	Year 10	12
Year 4	40		
Year 5	53		
Year 6	47		

Thirty-nine indigenous children attended St Raphael's in 2007.

Actual Retention rate from Year 9 2006 to Year 10 2007 was 75%. This number describes the percentage of Year 10 graduates in 2007 that were in the cohort that commenced Year 9 in 2006.

Apparent Retention rates from Year 7, 2004 to Year 10, 2007 was 86%. This number describes the percentage of the Year 7 cohort of 2004 who graduated from Year 10 at St Raphael's.

Student Attendance:

- Average student attendance rate 90.87%

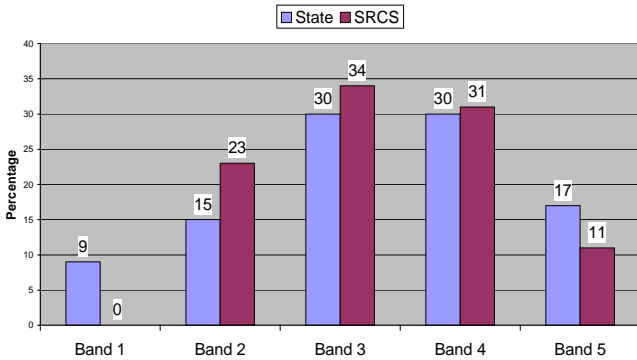
Post School Destinations:

- Workforce 0%
- Further Study 100%
- Unknown 0%

School Performance in Statewide Testing Year 3

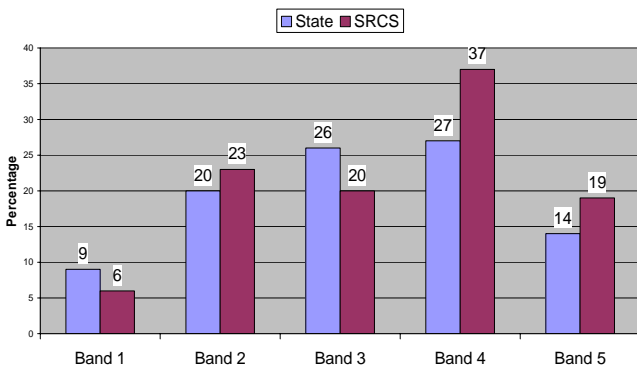
95% achieved Literacy benchmark

Year 3 Literacy 2007



95% achieved Numeracy benchmark

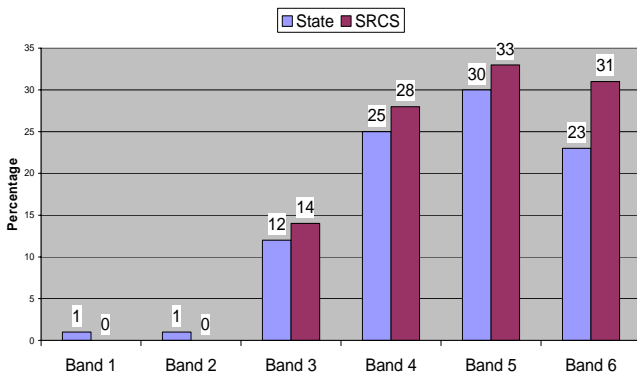
Year 3 Numeracy 2007



Year 5

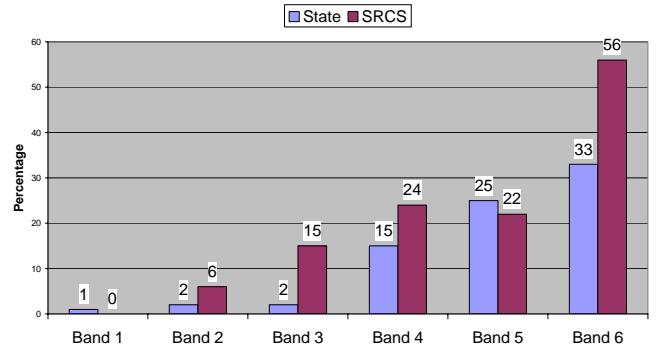
96% achieved Literacy benchmark

Year 5 Literacy



98% achieved Numeracy benchmark

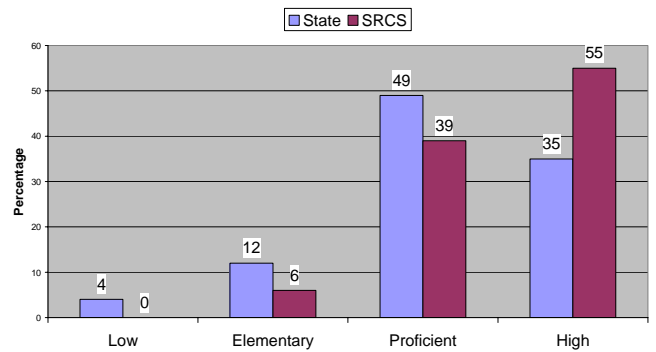
Year 5 Numeracy 2007



Year 7

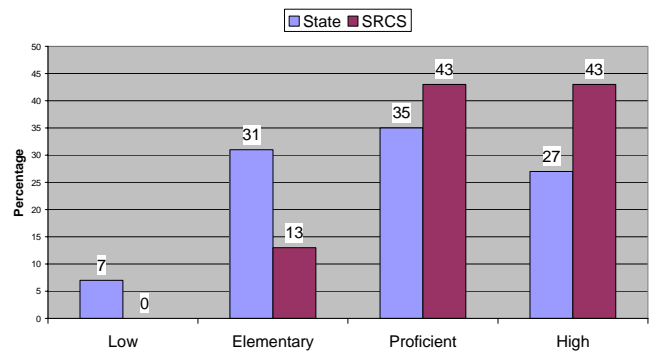
97% achieved Literacy benchmark

Year 7 ELLA 2007



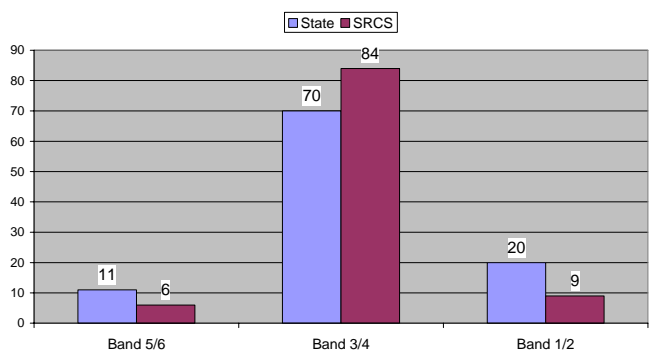
91% achieved Numeracy benchmark

Year 7 SNAP 2007



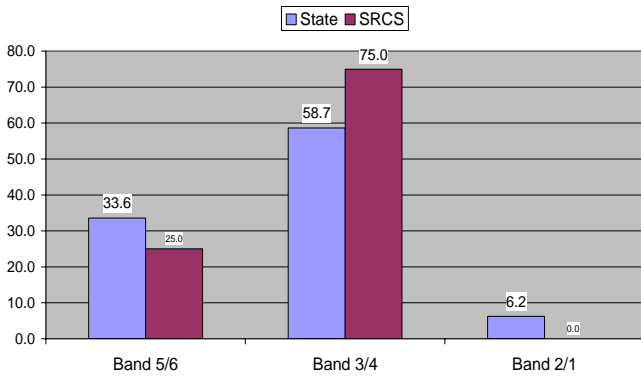
Year 8

Year 8 ESSA 2007

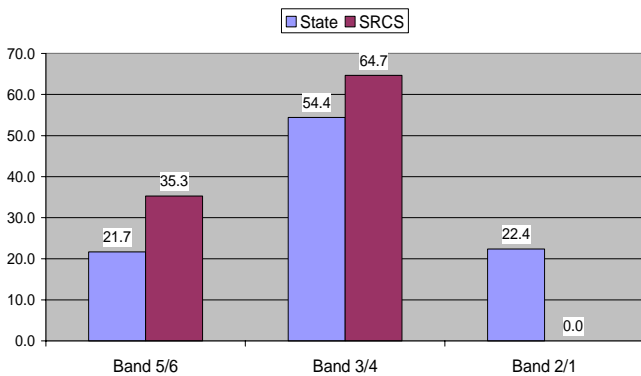


Year 10

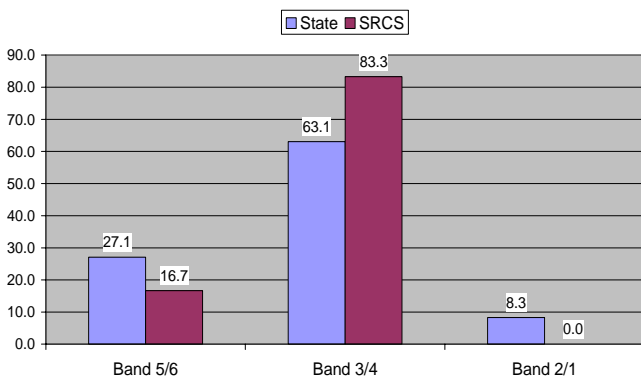
School Certificate English 2007



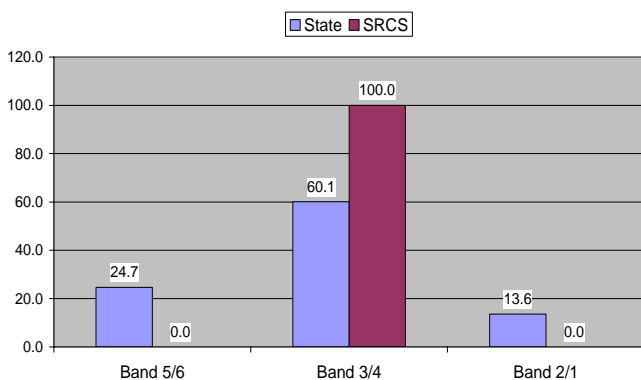
School Certificate Mathematics 2007



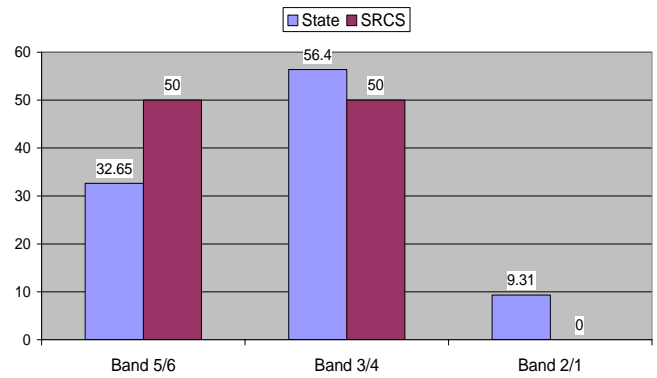
School Certificate Science 2007



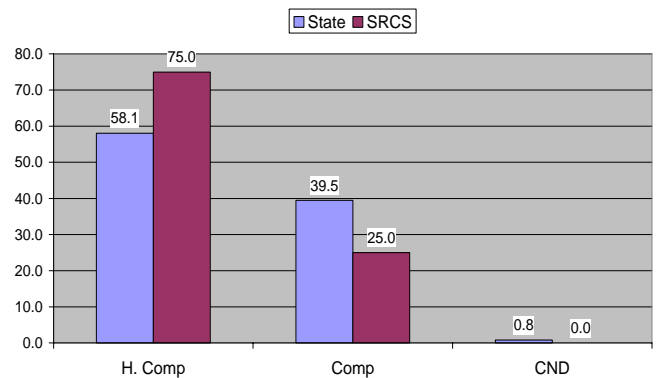
School Certificate History 2007



School Certificate Geography 2007



School Certificate Computer Studies 2007



School Policies

1. Welfare and Discipline Policies:

Anti Bullying Policy

Behaviour Management Plan

Found in:

School Prospectus

School Policies Manual

Staff Handbook

Secondary Student Diary

BMP Handbook for each family

Enrolment Package

The school does not condone the use of corporal punishment. This form of punishment is not used anywhere in the school.

2. Complaints and Grievances

Parents are encouraged to contact the school if they have any concerns. Contact with the school should be made to arrange a formal interview. This can be done either in writing or by phone.

Students with grievances are encouraged in the first instance to contact their homeroom teacher. Confidentiality will be maintained at all times.

Special Needs Policy – CEO Policies and Procedures Manual at school.

Complaints and Grievances Policy – School Policies and Procedures Manual at school

Complaints and Grievances Policy extract – Parent Handbook.

School Determined Development Targets

Achievements:

Refurbished School Canteen
Prepared submissions for new classrooms
Introducedd ESSA in the Secondary
Department
Update Staff Handbook
Reviewed Uniform policy
Drew up a comprehensive Special Needs
Policy
OH&S improvements attended to.
Review and further develop primary reports

Goals:

Refurbish classrooms
Demolish targeted classroom block
Purchase Smartboards
Train staff in the use of Smartboards
Replace the roofing on the secondary block
Secure the balustrade of Library building
Fence in the remainder of the school ground
Host school appraisal

Promotion of Respect and Responsibility

The following activities were included in the school calendar to promote respect and responsibility:

Peer Support
Parish based community activities –
Healing Masses Easter liturgies
Caritas support
Charity support
NAIDIC Week participation
ANZAC day participation
Remembrance Day participation
Youth Week
World Peace Day
Festival of International Understanding

Staff and Teacher Standards

- The Staffing allocation for 2007 was 26.13 FTE. There were 9 support staff members.
- Every teacher at St Raphael's carries teaching qualifications appropriate to their area of responsibility. There was one New Scheme teacher qualifying for recognition by the NSW Institute of Teachers.
- Three staff members were engaged in post graduate studies.

Teacher attendance rate and retention

- Average teacher attendance rate was 96.1%
- Teacher retention rate of 93.94%

Staff Professional Development

- 158 days of Professional Development were conducted / attended throughout 2007.
- Average expenditure per staff member on professional development in 2007 was \$560.

Parent, Student and Teacher Satisfaction

Through meetings of the Student Representative Council, Staff and the Parents and Friends Association the following messages have been given:

- ✓ *Staff members are competent, professional, approachable and helpful.*
- ✓ *The school feels welcoming and it bears a clear, strong Catholic ethos.*
- ✓ *The environment and facilities could do with some attention.*
- ✓ *The curriculum is current and relevant and supported by a good reporting scheme, although verbal reporting could be improved.*
- ✓ *The P&F Association is strong and effective.*
- ✓ *Communications from the school are effective in their information, reliability and timing.*

Financial Information

